

POWERED BY



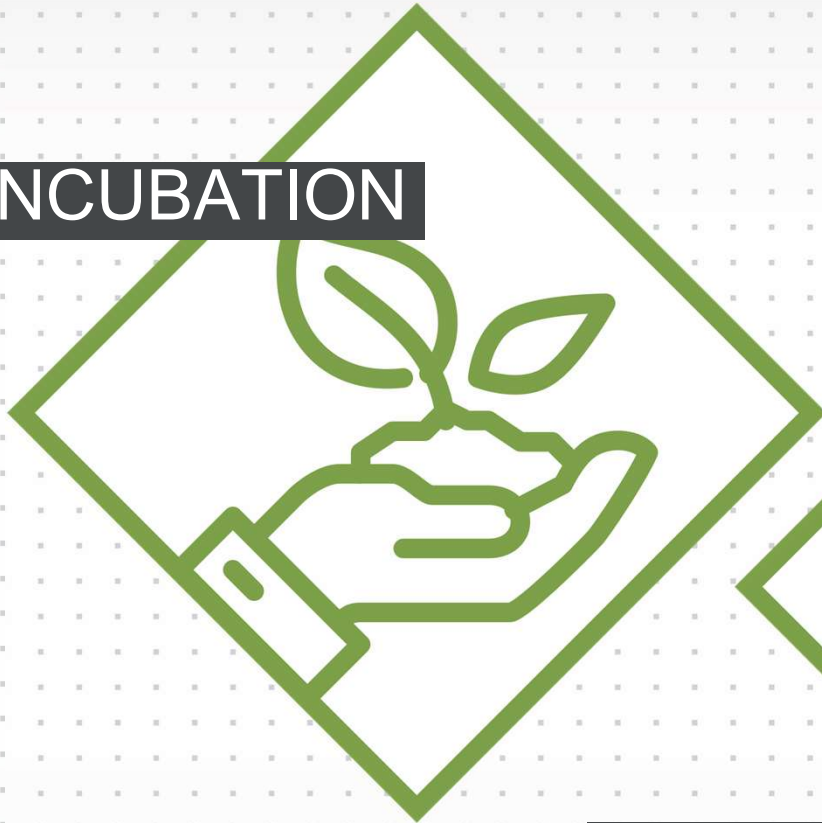
**tec labs**  
CENTRO DE INOVAÇÃO

**THE PLACE  
TO DRIVE YOUR  
AMAZING SCIENCE  
INTO A SUCCESSFUL  
BUSINESS.**

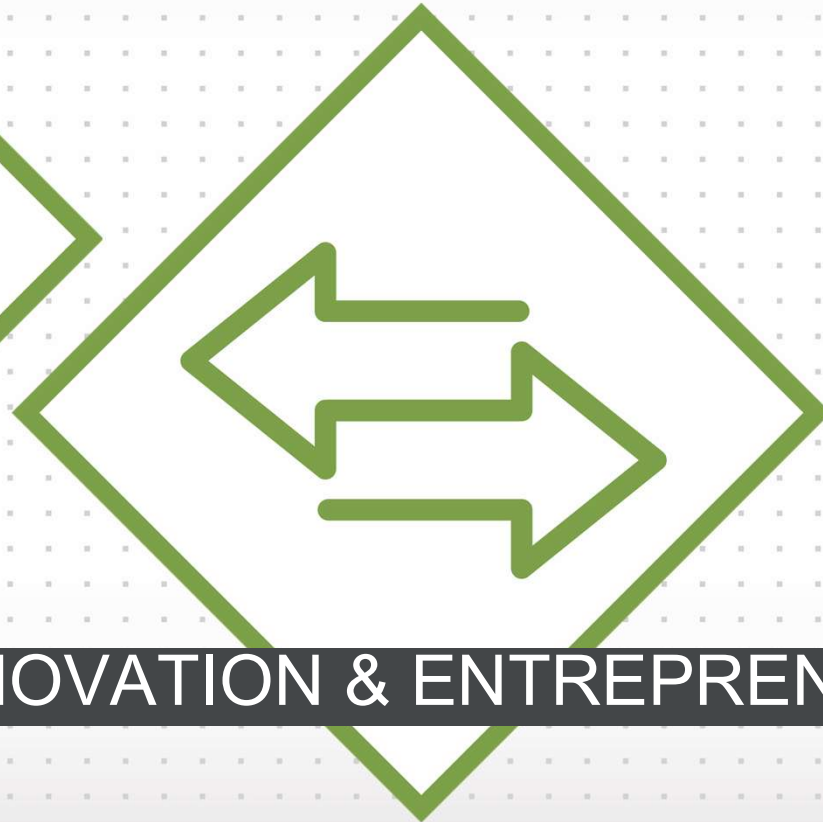
# OUR MISSIONS

POWERED BY  Ciências  
ULisboa

**INCUBATION**



**INNOVATION & ENTREPRENEURSHIP**





# INCUBATION

# OUR FOCUS

POWERED BY  Ciências  
ULisboa

AGROFOOD & SEA



URBAN MOBILITY & SUSTAINABILITY



EMERGING TECH



HEALTH & WELLNESS



# OUR SERVICES



**CHECK-IN**

VIRTUAL/OFFICE/LAB/C  
OLAB  
SHARED SERVICES  
FOOD HALL  
PARKING



**BOOST**

INCUBATION PROGRAM  
TROUGH WHICH WE  
MEET AND SUPORT  
OUR STARTUPS ON A  
REGULAR BASIS



**CONNECT**

WE CONNECT THEM  
WITH OUR MENTORS,  
INDUSTRY AND  
INVESTOR'S NETWORK



# COMPETITIVE ADVANTAGES

We have support labs on the incubator run by a group of applied researchers with +20 years of experience in the fields of microbiology and molecular biology and industry collaboration

Inside these labs there are +3Million in equipment and a lot of know-how that is available to our startups

• We are a university-based incubator, so we also deliver value to our entrepreneurs and innovators through the close connections we have to our teaching departments and R&D units, as well as with the Rectory of the University and other Schools of ULisboa



# OUR COMPANIES

## FOOD, FARM, FOREST & SEA

POWERED BY  Ciências ULisboa



# OUR COMPANIES HEALTH & WELLNESS

POWERED BY  Ciências  
ULisboa



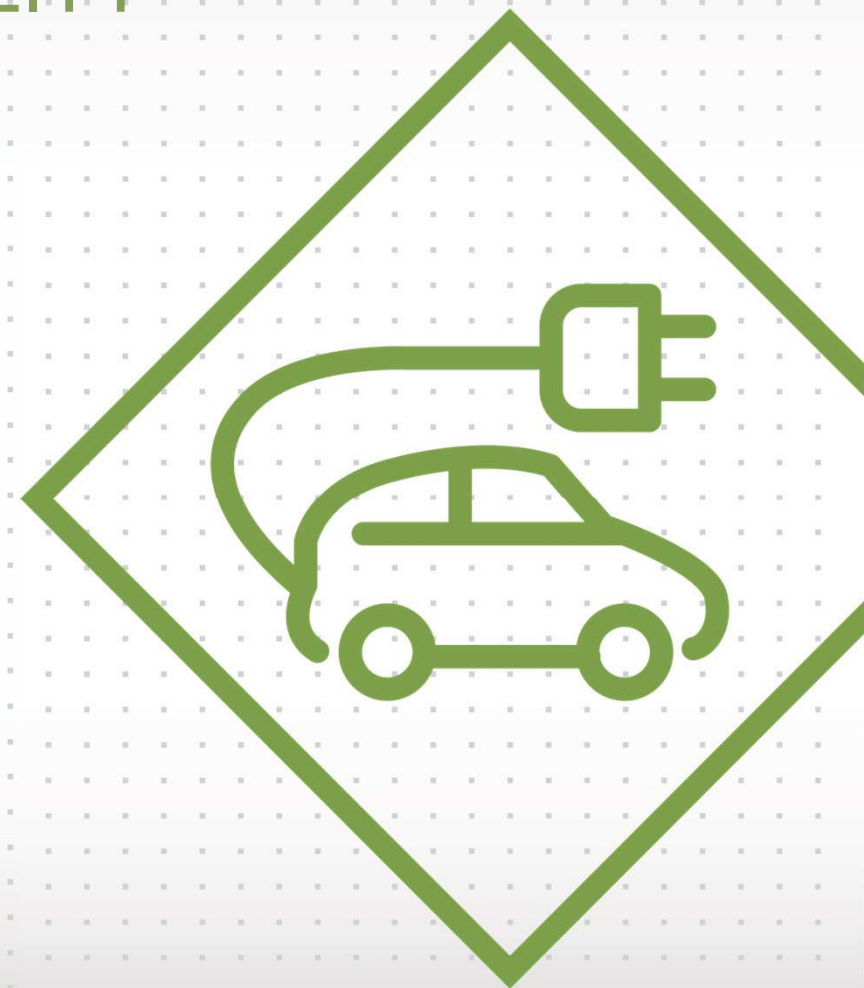


# OUR COMPANIES

## URBAN MOBILITY & SUSTAINABILITY

POWERED BY  Ciências  
ULisboa

BLASTING



# OUR COMPANIES EMERGING TECH

POWERED BY  Ciências  
ULisboa

CELESTIA  
PORTUGAL 

delox 

maxdata 

ONTOP 

UAWLT 

  
deltasoluções

BIORAH 

unicage 



DATA

POWERED BY  Ciências  
ULisboa

**32** **120**  
INCUBEES COMPANIES

**30** YEARS OF  
ACTIVITY

**100** **€40M**  
ANNUAL REVENUE  
**JOBS**

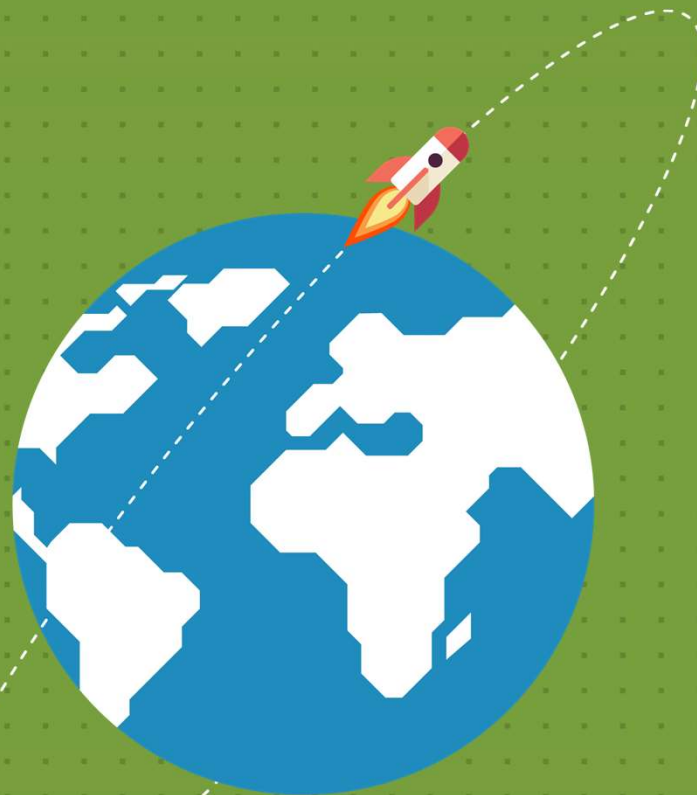
**24** APPLICATIONS  
STARTUP VISA  
**4** INTERNATIONAL  
STARTUPS ACCEPTED

**2 EUROPEAN STARTUP FROM  
BRIDGEHEAD (EIT HEALTH)**

# GROWING GLOBAL

POWERED BY  Ciências ULisboa

INTERNATIONAL  
STARTUPS  
INCUBATED **6**



INTERNATIONALIZATION SUPPORT TO  
**7** EUROPEAN  
STARTUPS



# NOTABLE ALUMNI

POWERED BY  Ciências  
ULisboa



***Science4you***



**BIOPREMIER**



***biosurfit***



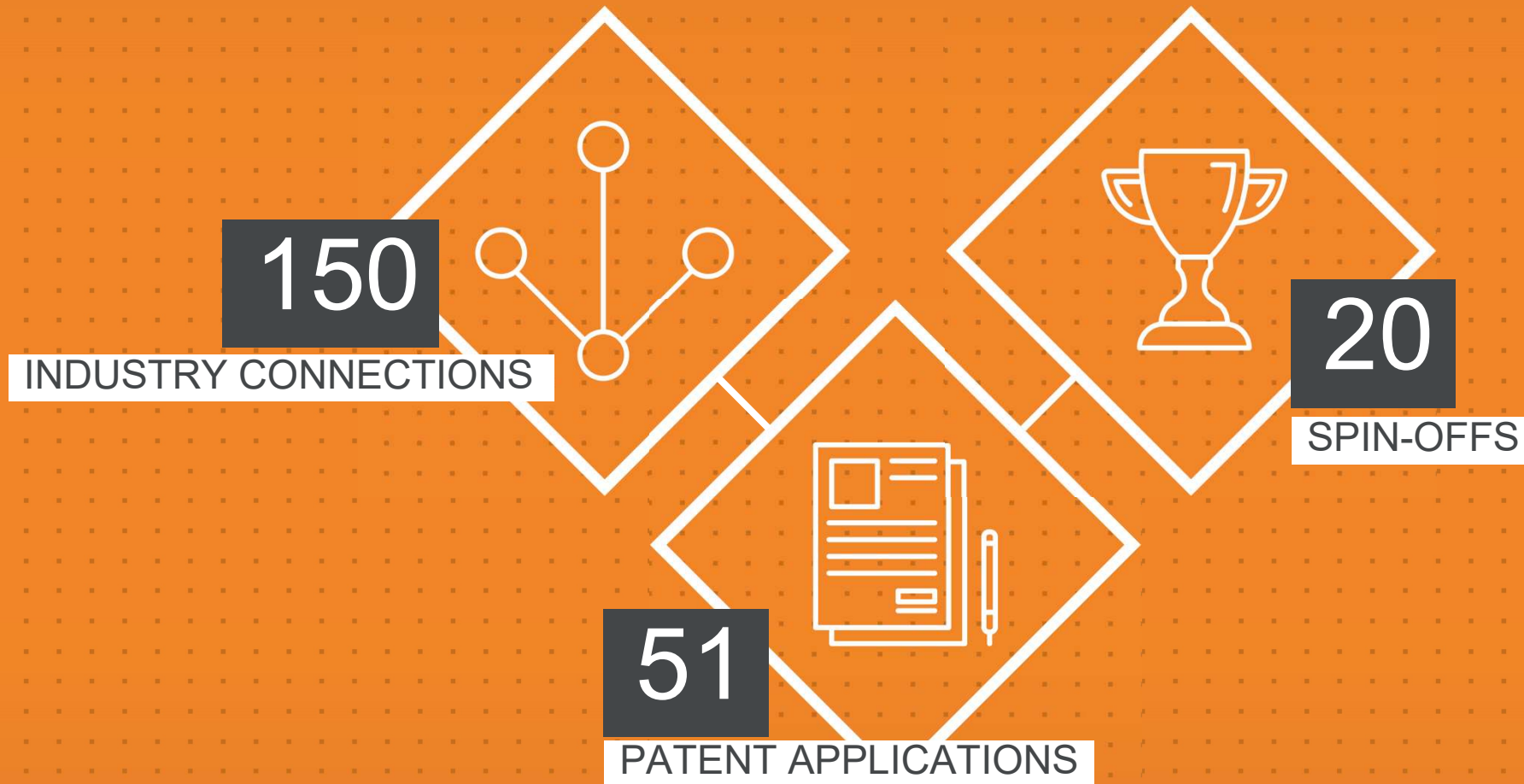
**bioalvo**





# INNOVATION & ENTREPRENEURSHIP

# DATA



# SCIENCE BUSINESS

ECONOMIC VALORISATION OF SCIENTIFIC AND TECHNOLOGICAL KNOWLEDGE

AN INNOVATIVE METHODOLOGY THAT ENCOURAGES AND SUPPORTS THE ECONOMIC VALORIZATION OF SCIENTIFIC AND TECHNOLOGICAL KNOWLEDGE IN HIGHER EDUCATION AND RESEARCH CENTRES WITHIN ULISBOA

# SCIENCE BUSINESS

ECONOMIC VALORISATION OF SCIENTIFIC AND TECHNOLOGICAL KNOWLEDGE



**LEARNING**  
SCIENCE  BUSINESS



**SELECTION**  
SCIENCE  BUSINESS



**EVOLUTION**  
SCIENCE  BUSINESS

The LEARNING stage is divided in formal and non-formal education: the first includes optional courses on entrepreneurship and innovation destined to undergraduate and graduate students; non-formal education consists of workshops on various topics of business, design and innovation that are open to students and the general public.



**LEARNING**  
**SCIENCE<sup>2</sup>BUSINESS**



DATA

350 PROJECTS

1500 STUDENTS  
ENROLLED

Non-formal education workshops

7 OPTIONAL  
COURSES  
WITH OVER

3000

STUDENTS

50

ORGANIZATIONS  
INVOLVED IN THE  
STUDENTS PROJECTS

SCIENCE  BUSINESS  
**LEARNING**

SELECTION is a phase of the methodology where we offer two different programs to work with our main audiences: researchers and students.



RESEARCHERS AND STUDENTS  
IMPACT PROGRAM/CALL FOR PROJECTS



**SELECTION**  
SCIENCE<sup>2</sup>BUSINESS

# RESEARCHERS IMPACT PROGRAM

POWERED BY  Ciências  
ULisboa



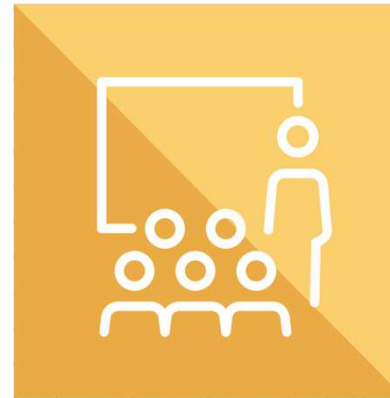
## SCOUTING

We want to get to know the best applied projects within ULisboa.



## SELECTING THE FINALISTS

Training and mentoring the applicants before choosing the finalists.



## CAPACITATION

Finalists will have access to a capacitation programme that will help them develop their projects, bring them closer to the market and prepare them for the Final Event.



## FINAL EVENT

The finalists will pitch for a carefully selected jury that will decide who's the Winning Team, including a networking moment with investors and industry partners.

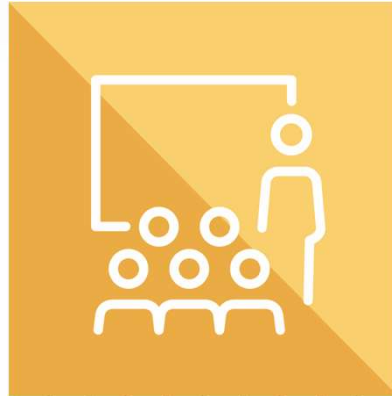
# STUDENTS SUMMER SCHOOL

POWERED BY  Ciências  
ULisboa



## SELECTION

Students from the different ULisboa Schools can apply individually be selected to integrate multidisciplinary teams.



## TRAINING

Students will receive training in entrepreneurship, innovation and business creation topics.



## PROBLEM SOLVING

Teams will be assigned with challenges provided by companies that they should solve during the Summer School.



## FINAL EVENT

A demo day where teams will pitch their solutions to a carefully selected jury that will choose the winning teams per challenge, in an event open to the public.



# SELECTION OFFICIAL PARTNERS

POWERED BY  Ciências  
ULisboa



Lisbon School  
of Economics  
& Management  
Universidade de Lisboa



**Frontier IP Group plc**



**ARMILAR** **20**  
YEARS  
VENTURE PARTNERS

**Bionova**  
**Capital** *for Health.*

SCIENCE | BUSINESS  
**SELECTION** 



After the Call for Projects and Summer School, the finalist from both programs enter the EVOLUTION where they have access to Tec Labs ecosystem and support in order to grow their project to the next level.



**EVOLUTION**  
**SCIENCE<sup>2</sup>BUSINESS**

DATA

POWERED BY  Ciências  
ULisboa

36  
TEAM  
APPLICATIONS

4 EDITIONS

6 SPIN  
OFFS



EMOTAI



UAWLT

nevaro

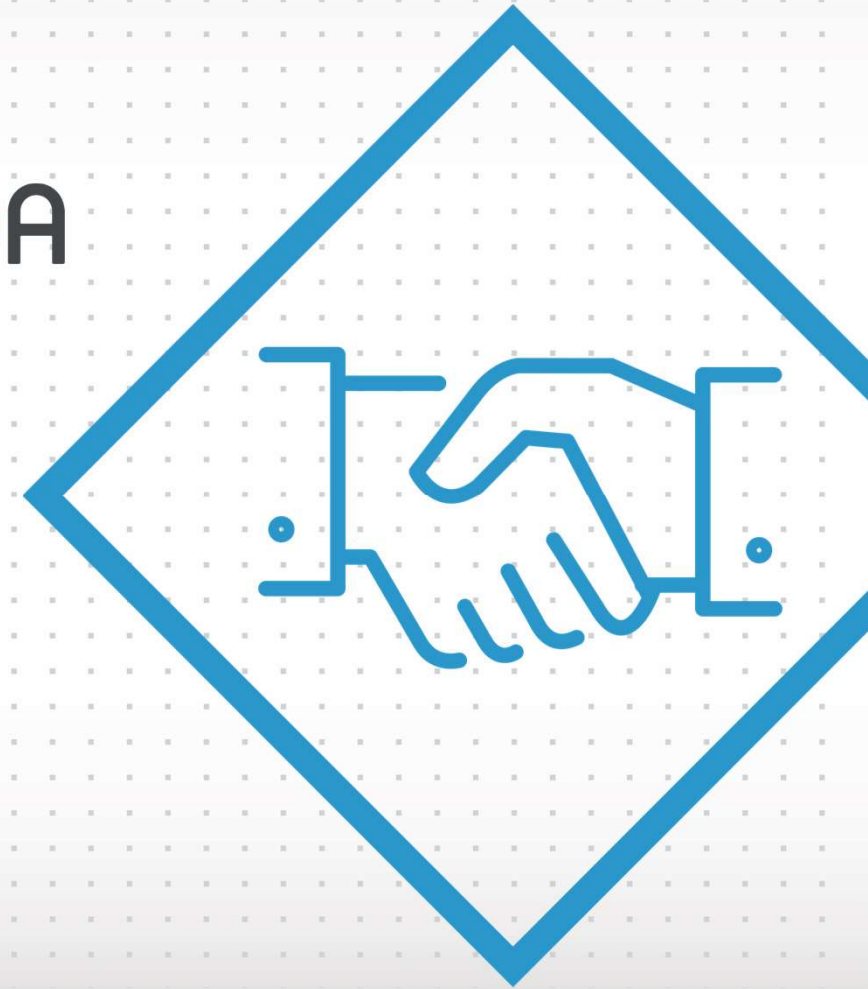
R-nyucell

KEEPIT

SCIENCE | BUSINESS  
EVOLUTION

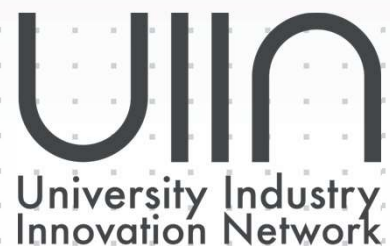
# PARTNERSHIPS

POWERED BY  Ciências  
ULisboa



# NETWORKS

POWERED BY  Ciências ULisboa





# WHO WE ARE



JORGE MAIA ALVES



RITA TOMÉ ROCHA



INÈS NETO



MAFALDA CARVALHO



FILIPA ANTUNES



MIGUEL VEIGA



ANA PRATA



TERESA VIEIRA





**tec labs**  
CENTRO DE INOVAÇÃO

# GET IN TOUCH

FCUL CAMPUS, LISBON

+351 217 500 006

[www.teclabs.pt](http://www.teclabs.pt)

[mail@teclabs.pt](mailto:mail@teclabs.pt)

[/teclabs](https://www.facebook.com/teclabs)

[@tec.labs](https://www.instagram.com/tec.labs)

[/company/teclabs](https://www.linkedin.com/company/teclabs)

POWERED BY



**tec labs**  
CENTRO DE INOVAÇÃO

**THANK  
YOU**